

Community Evacuation Plan

Prepared by: Tray Palmer Fire Safety Consulting Services 
Traypalmer1@outlook.com June 2025

Protective actions such as evacuation are extremely important in communities that border the Wildland Urban Interface. The Caughlin Ranch community has already been through two major wildfire events that destroyed many homes. This evacuation plan addresses the community's demographics, location, infrastructure, resources, and provides residents with a decision-making process for systematic preparation.

In an emergency it is easy to panic. Being prepared before wildfire happens and knowing when and how to evacuate will help keep you focused and able to act quickly in the event of a true emergency.

This document will supply the following basic information you will need to prepare your family for a rapid evacuation.

- **Creating a Wildfire Action Plan**
- **Creating a Family Communication Plan**
- **Creating an Emergency Supply Kit**
- **Creating an Evacuation Checklist**
- **Knowing your primary and secondary evacuation routes**
- **Knowing how to obtain accurate information during and after evacuation**

CREATE A WILDFIRE ACTION PLAN

Your Wildfire Action Plan must be prepared and familiar to all members of your household prior to wildfire. Create an evacuation plan that includes a designated emergency meeting location outside anticipated fire areas and develop a Family Communication Plan that designates an out-of-area friend or relative as a point of contact to act as a single source of communication among family members in case of separation.

FAMILY COMMUNICATION PLAN			
EVACUATION MEETING PLACE:			
OUT-OF-AREA EMERGENCY CONTACT PERSON IS:			
NAME:		PHONE:	
E-MAIL:		ADDRESS:	
PRIMARY EVACUATION ROUTE:			
SECONDARY EVACUATION ROUTE:			
RENO FIRE (NON-EMERGENCY)	775-334-2300	TRUCKEE MEADOWS FIRE (NON-EMERGENCY)	775-326-6000
RENO POLICE: (NON-EMERGENCY)	775-334-2677 775-334-2121	WASHOE COUNTY SHERIFF (NON-EMERGENCY)	775-785-9276 775-328-3001
YOUR INSURANCE AGENT:		POLICY #	
DOCTOR OFFICE:			
OTHER:			

Prepare your Emergency Supply Kit

Duffle bags or backpacks work great for storing the following items and are quick to grab. Storing food and water in a tub or chest on wheels will make it easier to transport. Keep it light enough to be able to lift it into your car.

<input checked="" type="checkbox"/>	EMERGENCY SUPPLY KIT (Go-Bag)
SUGGESTED CONTENTS:	
	FACE MASKS OR COVERINGS
	THREE DAY SUPPLY OF NON-PERISHABLE FOODS (DON'T FORGET CAN OPENER)
	THREE GALLONS MINIMUM OF WATER
	PRESCRIPTIONS OR SPECIAL MEDICATIONS
	CHANGE OF CLOTHING, WEATHER AND SEASON APPROPRIATE (DON'T FORGET SHOES)
	EXTRA EYEGLASSES OR CONTACT LENSES
	SPARE BATTERY CHARGERS FOR PHONE AND LAPTOP
	EXTRA SET OF KEYS (CAR AND HOUSE)
	CREDIT CARDS AND CASH
	FIRST AID KIT
	FLASHLIGHT
	BATTERY POWERED RADIO WITH EXTRA BATTERIES
	SANITATION SUPPLIES
	COPIES (DIGITAL OR HARD COPY) OF IMPORTANT DOCUMENTS (BIRTH CERTIFICATES, PASSPORTS, INSURANCE, ETC..)
	PET FOOD AND PET MEDICATIONS
ITEMS TO TAKE IF TIME ALLOWS:	
	EASILY CARRIED VALUABLES
	FAMILY PHOTOS AND IRREPLACEABLE ITEMS
	PERSONAL COMPUTER INFORMATION ON HARD DRIVES AND THUMB DRIVES
OTHER FAMILY ADDITIONAL SUPPLY NEEDS	
KEEP A STURDY PAIR OF SHOES AND A FLASHLIGHT NEAR YOUR BED OR BY FRONT DOOR IN CASE OF A SUDDEN NIGHT EVACUATION.	

PRE-EVACUATION STEPS

When evacuation is anticipated, follow this checklist (if time allows):

WILDFIRE EVACUATION CHECKLIST	
OUTSIDE	
<input checked="" type="checkbox"/>	Gather flammable items from the exterior of the house and bring them inside (patio furniture, children's toys, door mats, trash cans, etc.).
<input type="checkbox"/>	Turn off propane tanks.
<input type="checkbox"/>	Move propane BBQ appliances away from structures.
<input type="checkbox"/>	Connect garden hose to outside water valves or spigots for use by firefighters. Fill water buckets if you have them, and place them around the house.
<input type="checkbox"/>	Turn off sprinklers and running water; leaving them on can affect critical water pressure.
<input type="checkbox"/>	Leave exterior lights on so your home is visible to firefighters in the smoke or darkness of night.
<input type="checkbox"/>	Put your Emergency Supply Kit (go-bag) in your vehicle.
<input type="checkbox"/>	Back your car into the driveway with vehicle loaded and all doors and windows closed. Carry your car keys with you.
<input type="checkbox"/>	Have a ladder available and place it at the corner of the house for firefighters to quickly access your roof.
<input type="checkbox"/>	Close or seal attic and ground vents with pre-cut fire-resistant boards or commercial heat resistance seals.
<input type="checkbox"/>	Monitor your property and the fire situation. Don't wait for an evacuation order if you feel threatened and need to leave.
<input type="checkbox"/>	Check on neighbors and make sure they are prepared to leave.
INSIDE	
<input type="checkbox"/>	Shut all windows and doors, leaving them unlocked.
<input type="checkbox"/>	Remove flammable window shades and curtains.
<input type="checkbox"/>	Move flammable furniture to the center of the room, away from windows and doors.
<input type="checkbox"/>	Shut off gas at the meter or tank. Turn off pilot lights.
<input type="checkbox"/>	Leave your lights on so firefighters can see your house under smoky conditions.
<input type="checkbox"/>	Shut off the air conditioning or heater.
<input type="checkbox"/>	Locate your pets and keep them nearby and ready to go.

WHEN TO EVACUATE

Leave when evacuation is recommended by fire officials to avoid being caught in fire, smoke, or road congestion. You don't need to wait to be ordered by authorities to evacuate.

Fire officials will determine the areas to be evacuated and escape routes to use depending upon the fire's location, behavior, winds, and terrain. You will be advised of potential evacuations as early as possible. Follow evacuation directions immediately.

To protect yourself from flying embers, consider long pants, a long-sleeved shirt, closed-toed shoes, hat, face cover, and glasses. Clothing made of 100% cotton is preferable.



COMMUNICATION and INFORMATION DURING THE FIRE

You must take the initiative to stay informed and aware. Listen to your radio/TV for announcements. You may be directed to temporary assembly areas to await transfer to a safe location. The terms “Warning” and “Order” are used to describe evacuation orders. However, local jurisdictions may use other terminology such as “Precautionary” and “Immediate Threat.” These terms are used to alert you to the significance of the danger. All evacuation instructions provided by officials should be followed immediately for your safety. If you see a fire approaching, however, don’t wait for notification. Go!

Washoe County Partners with the Cities of Reno and Sparks to institute a notification system, Smart911, for use in times of crisis. The Smart911 cloud-based system relays emergency messages simultaneously through various methods. **Sign up by visiting:** www.smart911.com

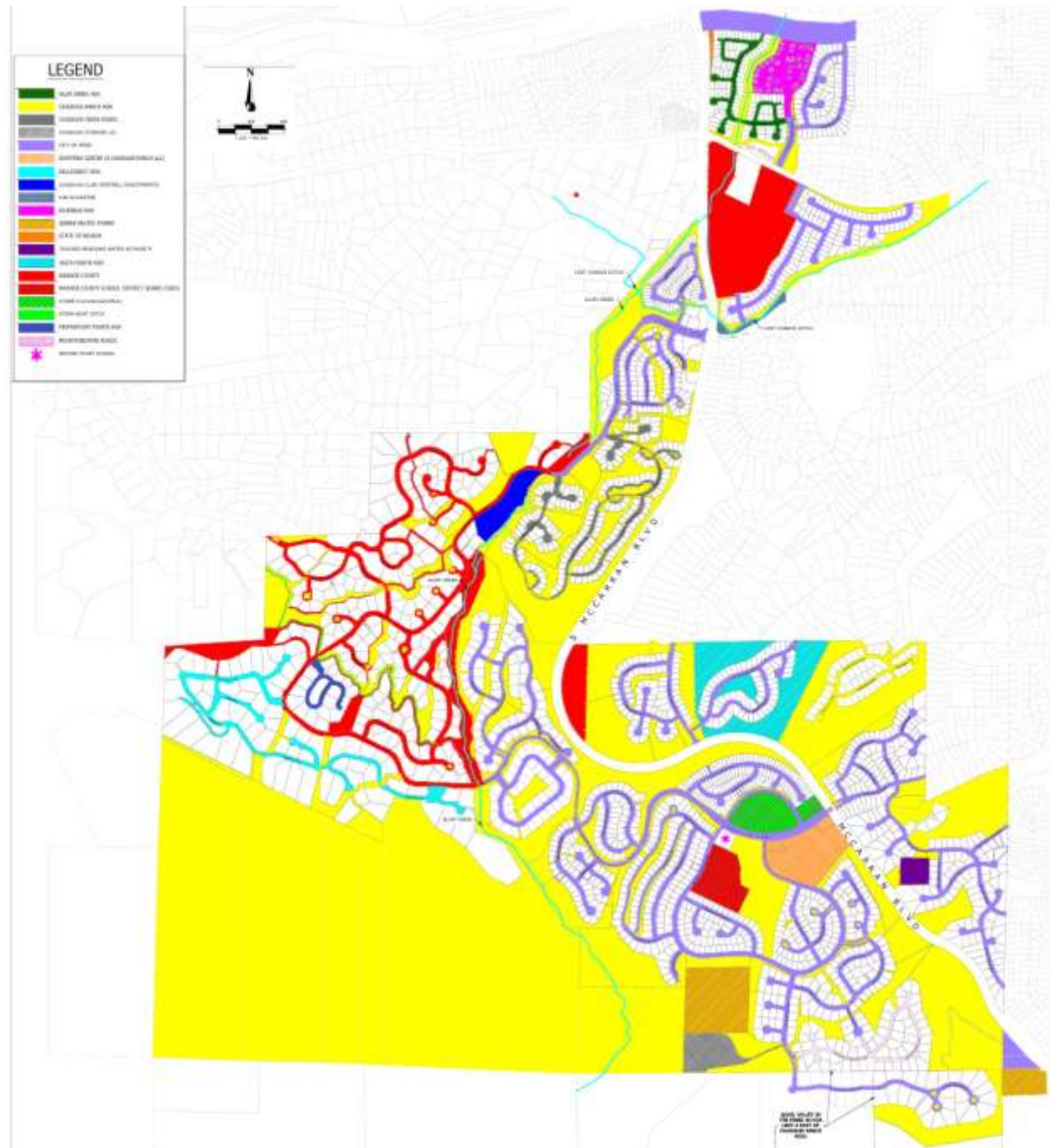
When a crisis occurs, local public safety officials use a few methods to alert the public:

1. **The Emergency Alert System (EAS).** This system delivers messages via broadcast on radio and television.
2. **Wireless Emergency Alerts (WEA).** These messages come to your cell phone via text and voice.
3. **Reverse-dial.** A pre-recorded message is sent to your landline.
4. **Email.** By signing up Smart911 you can choose to receive notifications via email. Sign up by visiting: www.smart911.com
5. **Social & Traditional Media.** [Follow us on Twitter](#) and [Like us on Facebook](#)

The following web sites and social media platforms are also used to relay information quickly:

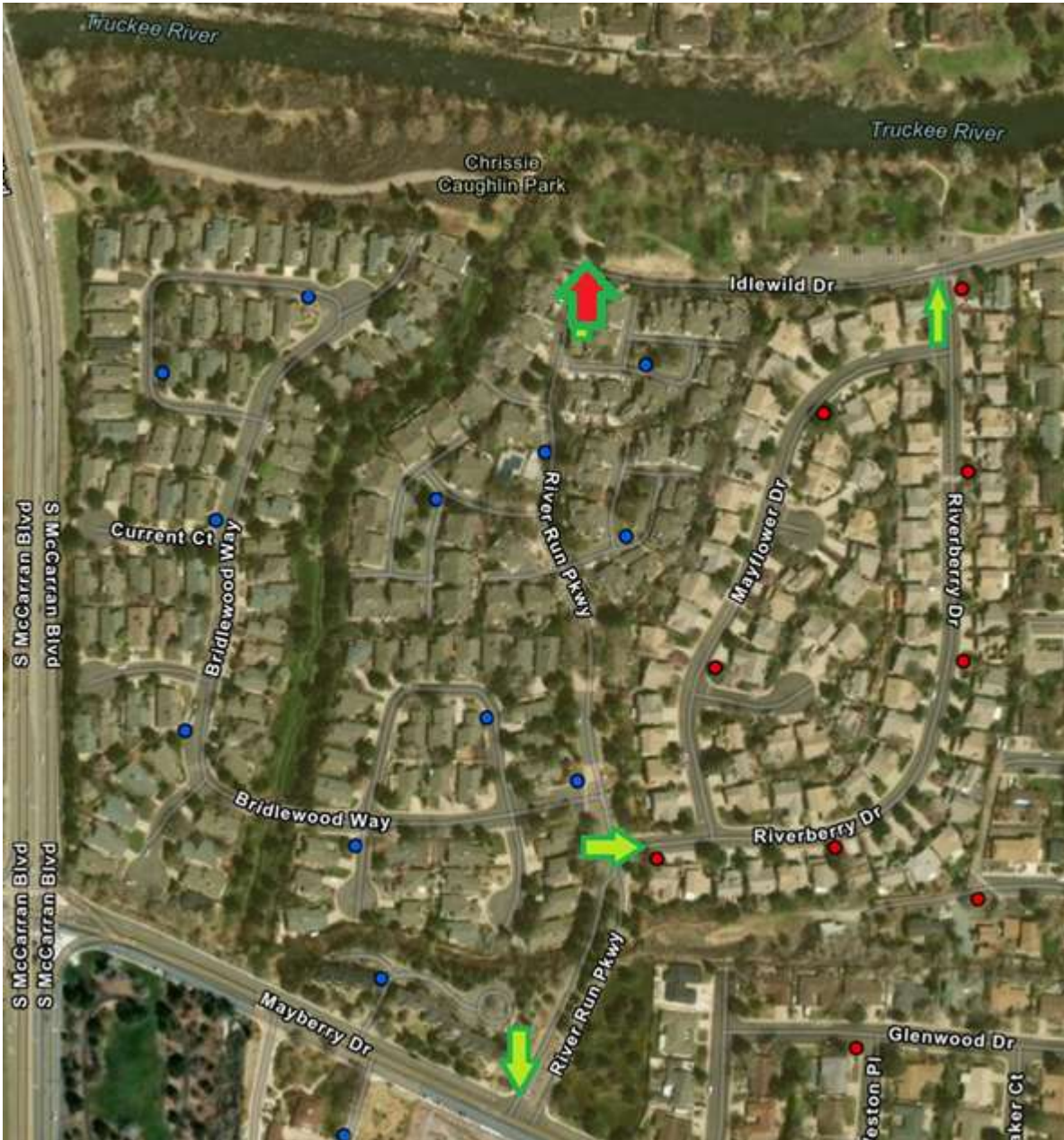
- <https://app.watchduty.org/>
- <https://perimetermap.com>
- <https://wfca.com/fire-map>
- <https://www.nevadafireinfo.org/>
- <https://inciweb.wildfire.gov/incident-information>
- <https://www.2news.com/>
- <https://mynews4.com/>
- <https://www.kolotv.com/>
- <https://www.rgj.com/>
- <https://www.weather.gov/rev/>

EMERGENCY ROUTES



There are multiple routes that lead to main vehicle emergency routes of McCarran Blvd, 4th street, Mayberry Drive, Moana Lane, and Plumb Lane. Depending on where you live will dictate the quickest way to leave the community. It is important to know the alternate egress routes in case your primary exit is blocked.

The following maps identify the primary routes, secondary routes, and emergency access gates that may be used in the event of an emergency evacuation. **KNOW YOUR ZONE!**



Primary Route 1 – River Run Pkwy to Mayberry Drive

Primary Route 2 – Riverberry Drive to Idlewild Drive

Secondary – River Run Pkwy to Idlewild Drive



Primary Route 1 – Eastwood Drive to Mayberry Drive (Main entrance)

Primary Route 2 – Bramble Drive to Mayberry Drive

Primary Route 3 – Homewood Drive to W. Plumb Lane

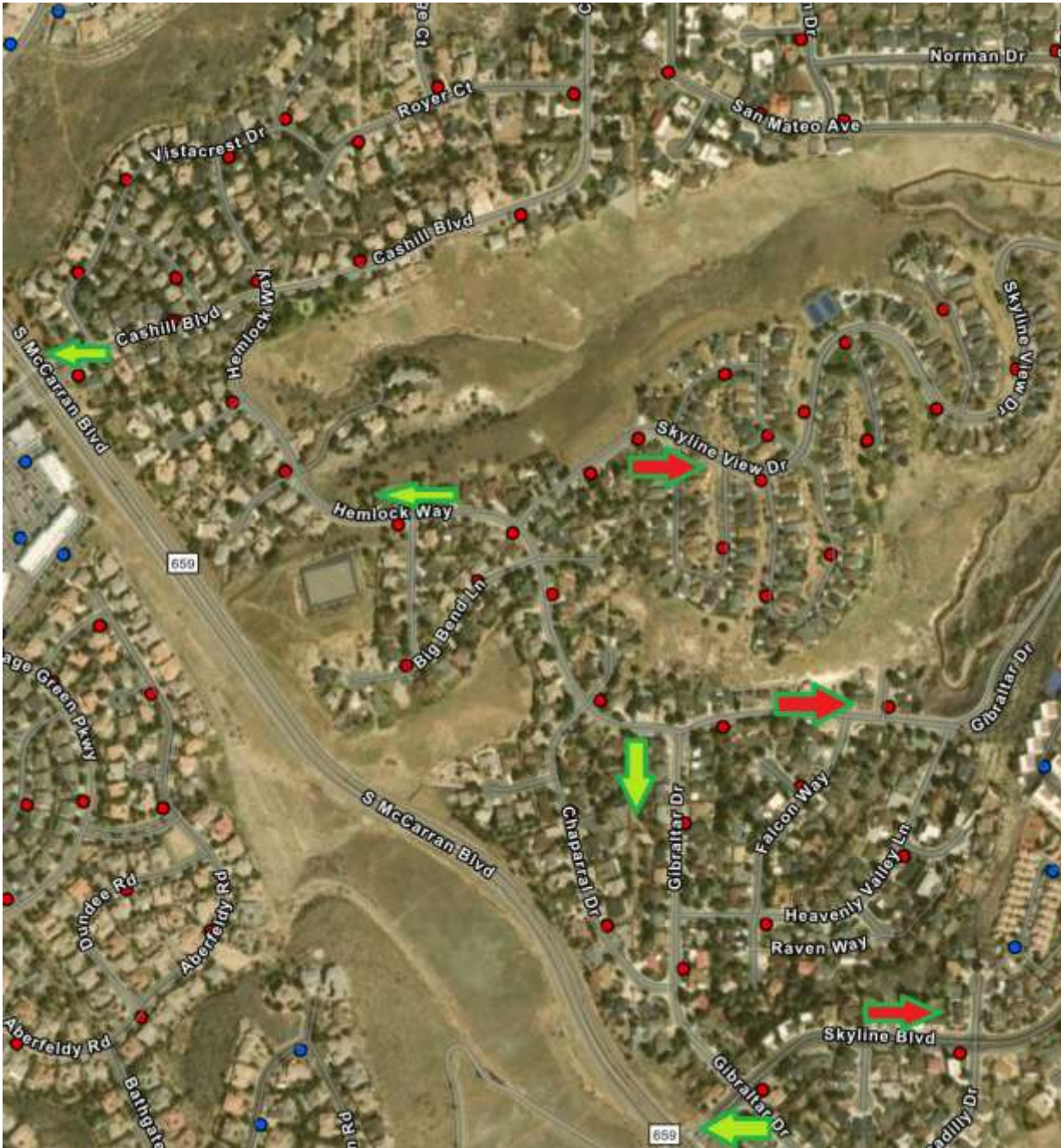


Primary Route 1 – Greensburg Circle to S. McCarran Blvd

Primary Route 2 – Southhampton to Brighton Way to Greensburg Circle to McCarran Blvd

Secondary -Bridgewater Drive toward Plumb Lane through various streets

Secondary -Meridan Way towards Cashill Blvd or Plumb Lane through various streets



Primary route 1 – Cashill Blvd to S McCarran Blvd.

Primary route 2 – Skyline Blvd to S McCarran Blvd.

Secondary – Skyline Blvd to Moana or Plumb Lane

Secondary – Skyline View Drive to Cashill Blvd.



Primary Route 1 – Caughlin Pkwy to S McCarran and Cashill Blvd.

Secondary – Caughlin Pkwy to S McCarran and Plumb Lane.



Primary Route 1 – Caughlin Pkwy to S McCarran and Cashill Blvd.

Primary Route 2 - Caughlin Pkwy to S McCarran and Plumb Lane.

Secondary – Plateau Road to Mayberry Drive.



Primary Route 1 – Caughtlin Pkwy to S McCarran and Plumb Lane.

Primary Route 2 – Plateau Rd to Caughtlin Pkwy.

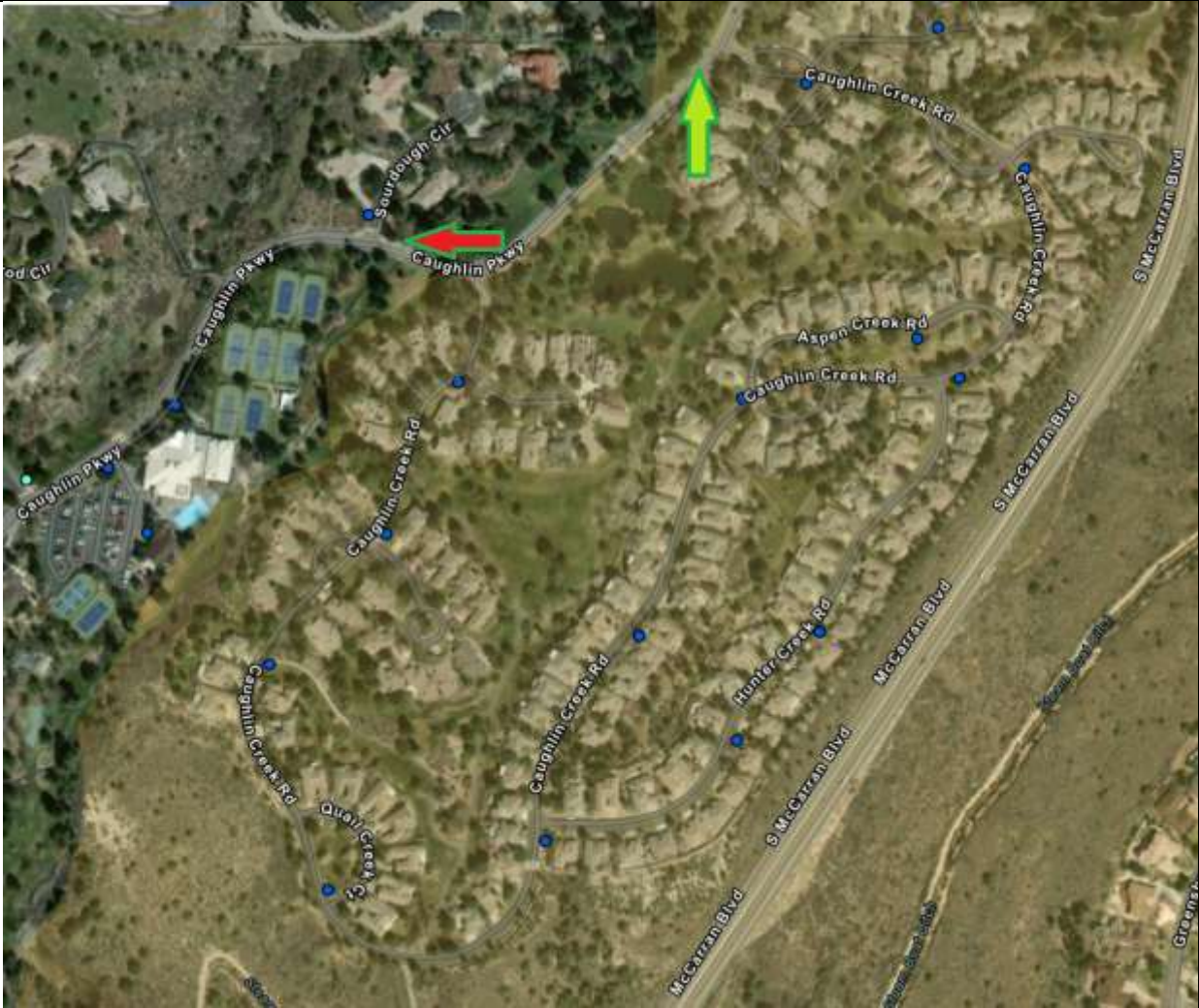
Secondary – Ross Drive toward Mayberry

Secondary – Plateau Road to Mayberry

Secondary – Caughtlin Pkwy to S McCarran and Cashill Blvd

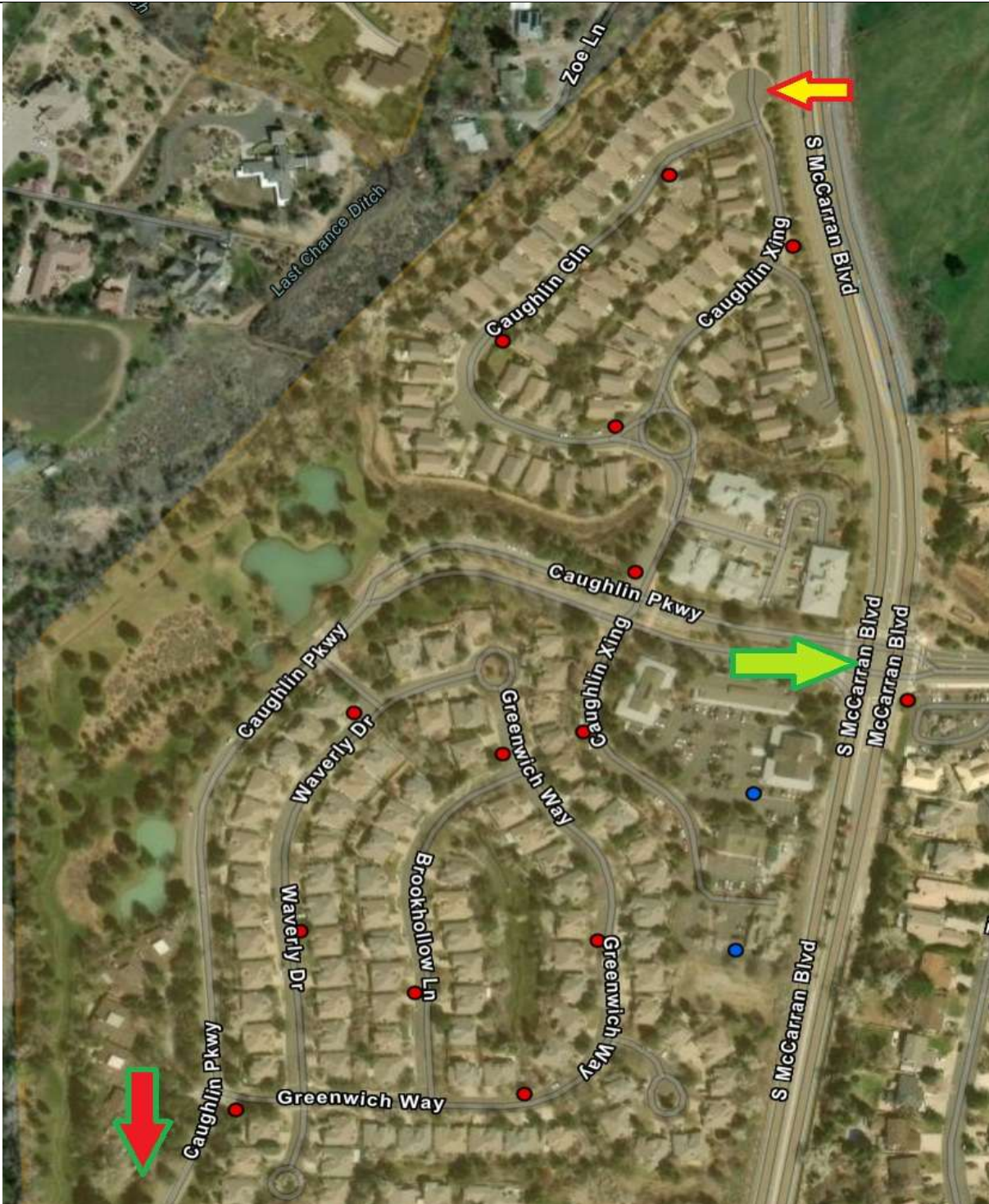
ZONE 8

CITY



Primary Route 1 – Caughlin Pkwy to S McCarran and Plumb Lane.

Secondary - Caughlin Pkwy to S McCarran and Cashill Blvd.



Primary Route 1 – Caughlin Pkwy to S McCarran Blvd and Plumb Lane.

Secondary – Caughlin Pkwy to S McCarran and Cashill Blvd.

Emergency Access Gate – S McCarran and Caughlin Glen.

WHAT TO DO IF TRAPPED:

Stay Calm and call 911.



WHILE IN YOUR VEHICLE:

- Park your vehicle in an area clear of vegetation.
- Close all vehicle windows and vents. If possible, cover inside of windows with a wool or cotton blanket to minimize radiant heat.
- Cover yourself with a wool or cotton blanket or jacket.
- Lie on vehicle floor.

WHILE ON FOOT:

- Go to an area clear of vegetation, a ditch, or depression on level ground, if possible.
- Lie face down and cover up your body.
- If near a body of water—pool, creek, pond, lake, etc.—seek safety in the water or use it to keep distance away from the fire. Be careful not to be swept away by moving water or get too deep.

WHILE IN YOUR HOME:

- Stay calm and keep your family together.
- Fill sinks and tubs with cold water.
- Keep doors and windows closed but unlocked.
- Stay inside your house.
- Stay away from outside walls and windows.
- Turn on lights so emergency officials know you are inside.

This document (Community Evacuation Plan) was approved by the Caughlin Ranch Board of Directors at a duly noticed Board Meeting on July 23, 2025.

Thomas Keiffer, President

Jon Ericson, Secretary